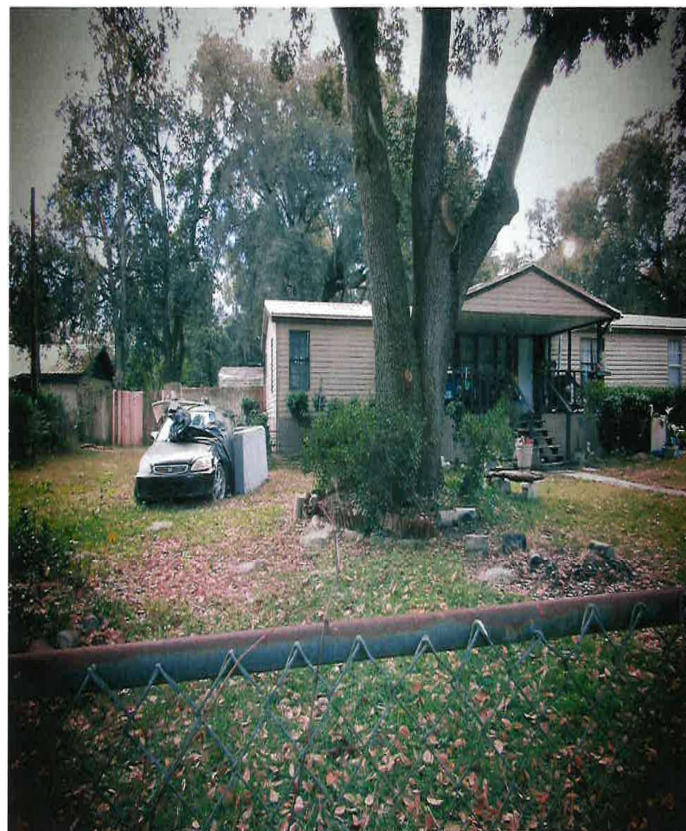


Nassau County
v.
Linda S. Groover Estate

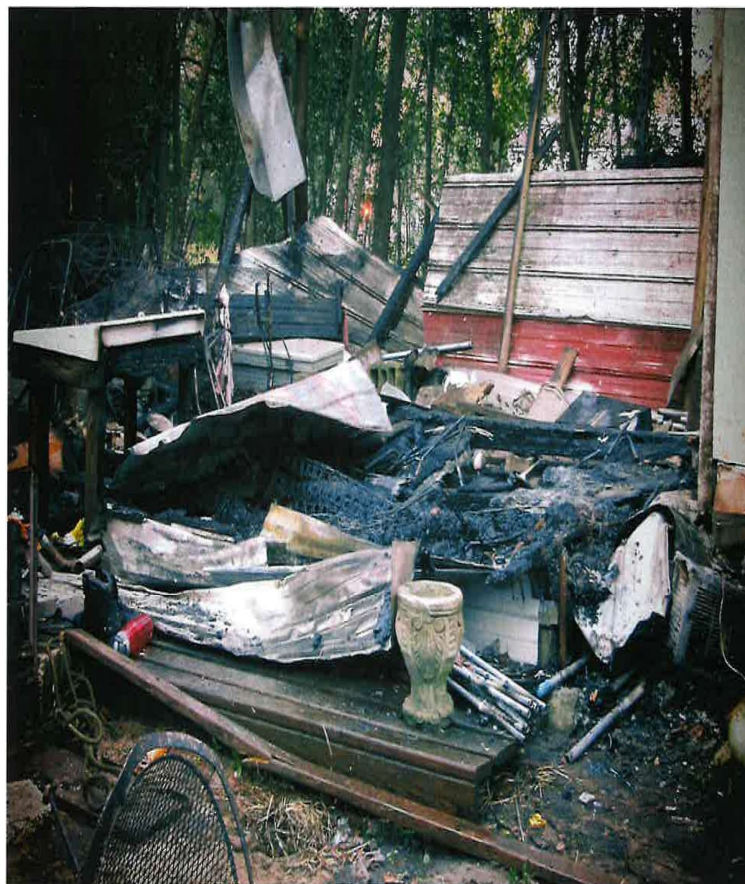
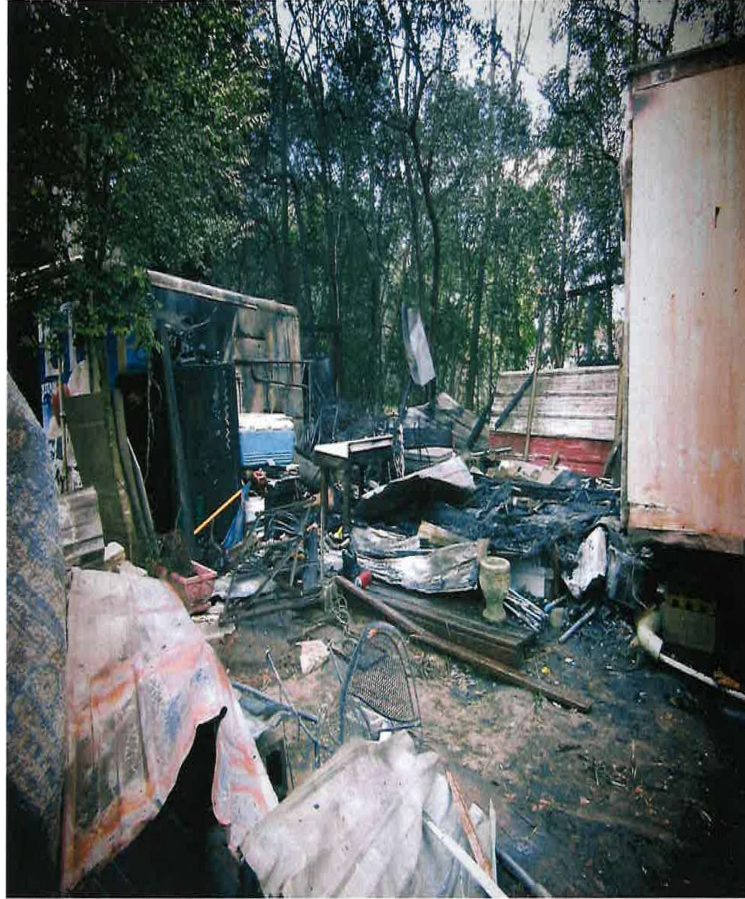
Case 23-7974

86088 Hill Valley Avenue
Yulee, Florida 32097

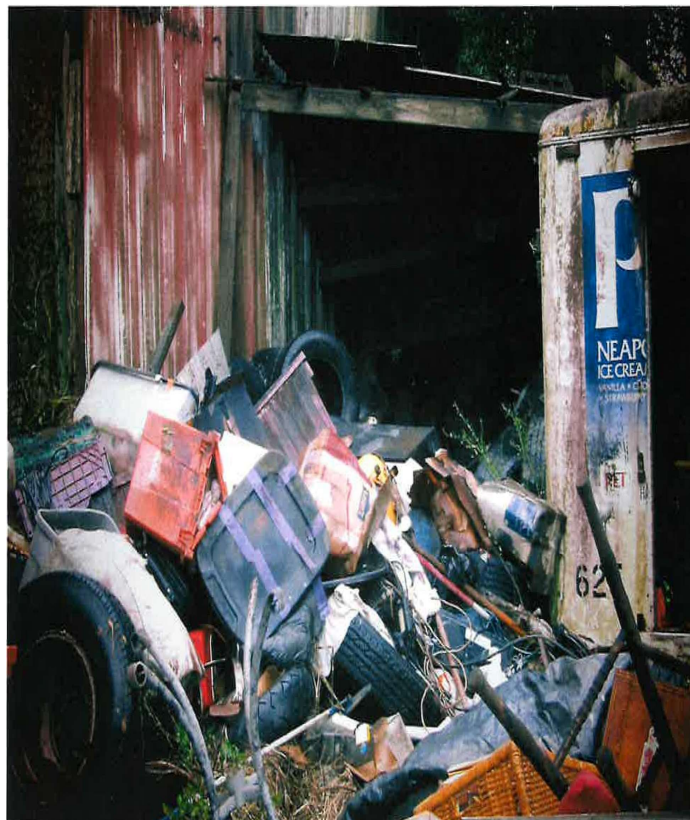
86088 Hill Valley Avenue
Yulee, Florida 32097
12.13.23 - Initial Inspection



86088 Hill Valley Avenue
Yulee, Florida 32097
12.13.23 - Initial Inspection



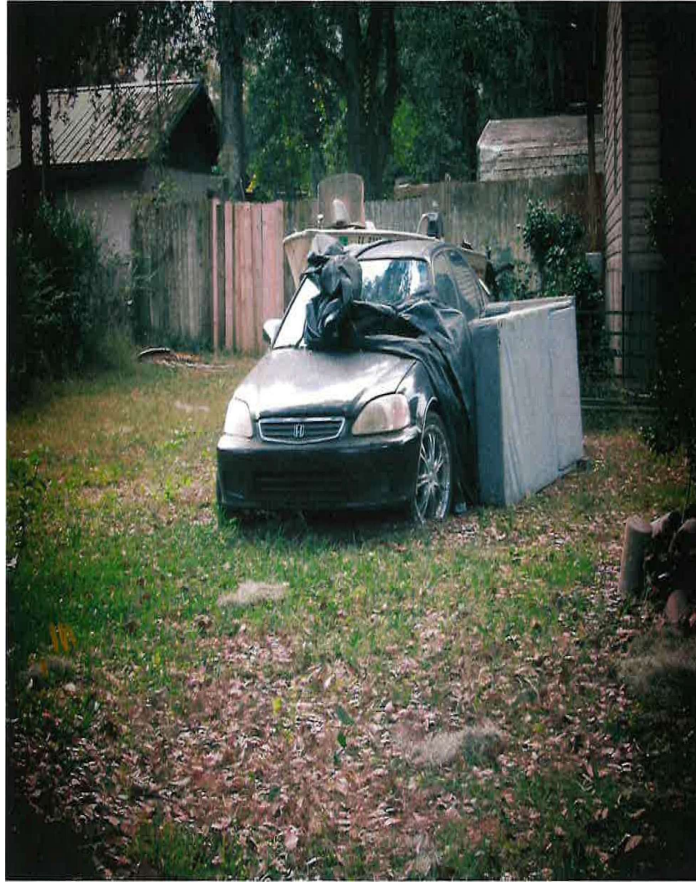
86088 Hill Valley Avenue
Yulee, Florida 32097
12.13.23 - Initial Inspection



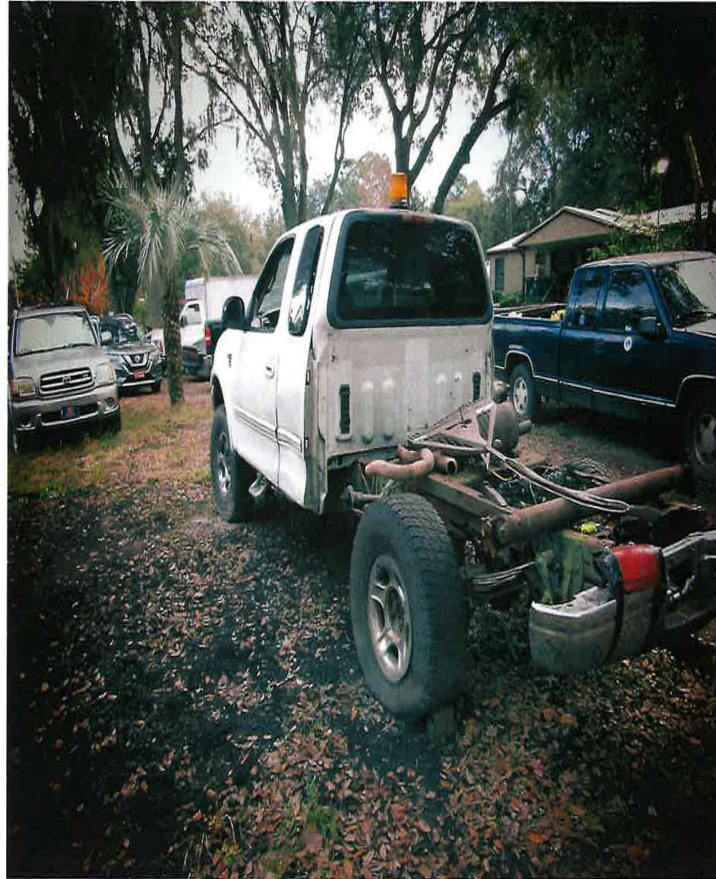
86088 Hill Valley Avenue
Yulee, Florida 32097
12.13.23 - Initial Inspection



86088 Hill Valley Avenue
Yulee, Florida 32097
12.13.23 - Initial Inspection



86088 Hill Valley Avenue
Yulee, Florida 32097
12.13.23 - Initial Inspection



86088 Hill Valley Avenue
Yulee, Florida 32097
12.13.23 - Initial Inspection



86088 Hill Valley Avenue
Yulee, Florida 32097
12.27.23 - Initial Inspection



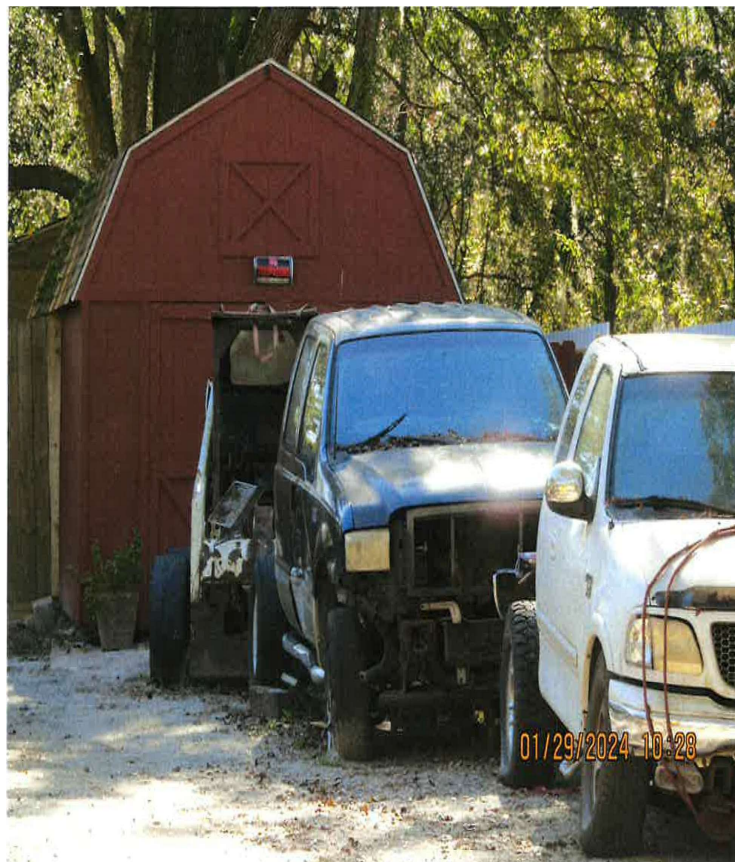
86088 Hill Valley Avenue
Yulee, Florida 32097
01.29.24 – Re-Inspection



86088 Hill Valley Avenue
Yulee, Florida 32097
01.29.24 – Re-Inspection



86088 Hill Valley Avenue
Yulee, Florida 32097
01.29.24 – Re-Inspection



86088 Hill Valley Avenue
Yulee, Florida 32097
02.22.24 – Re-Inspection



86088 Hill Valley Avenue
Yulee, Florida 32097
02.22.24 – Re-Inspection



86088 Hill Valley Avenue
Yulee, Florida 32097
03.15.24 – Re-Inspection



86088 Hill Valley Avenue
Yulee, Florida 32097
03.15.24 – Re-Inspection



86088 Hill Valley Avenue
Yulee, Florida 32097
03.15.24 – Re-Inspection

